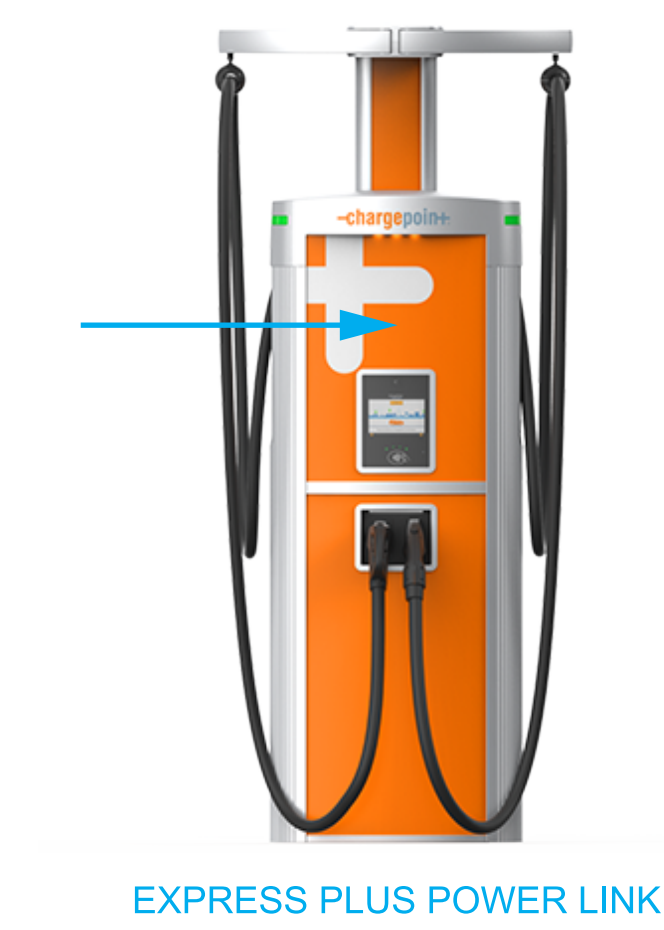


EXPRESS PLUS POWER LINK
CUSTOM SIGN TEMPLATE
- FRONT TOP



NOTES & REQUIREMENTS

- Artwork must be in **vector** format.
Do not use raster images.
- Artwork must be in CMYK process color.
(Call out any PMS numbers for reference, but artwork is screen printed using CMYK only.)
- Solid color only, no transparency or gradients
- For full bleed artwork, provide minimum 5-mm bleed
- Convert all fonts to outlines

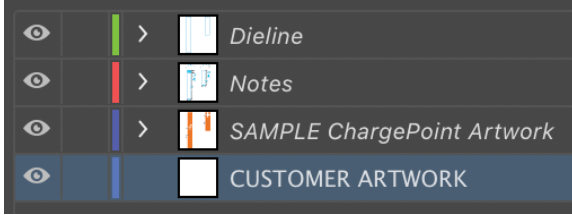
* ChargePoint artwork and notes are included as reference (ChargePoint Reference Artwork layer).

MATERIALS
Total thickness 0.040" max, comprised of:

1. Substrate:
 - a. White styrene, 0.030" thick
 - b. Non-reflective graphic film
 - c. Color: White.
2. UV curable, lightfast ink:
 - a. Opacity: High.
Gloss: High.
Formulation: Automotive grade.
Performance: 5-year.
 - b. In North America: NOR-COTE XL6 ink.
3. External PVC laminate:
 - a. Thickness: 2mil.
Opacity: Clear.
UV Protection extension factor: 4 years
 - b. In North America: 0.002" thick
ORAGUARD 290 PVC

Finished label is ROHS compliant.

ChargePoint standard artwork is included for reference only.
Place custom artwork on CUSTOMER ARTWORK layer:



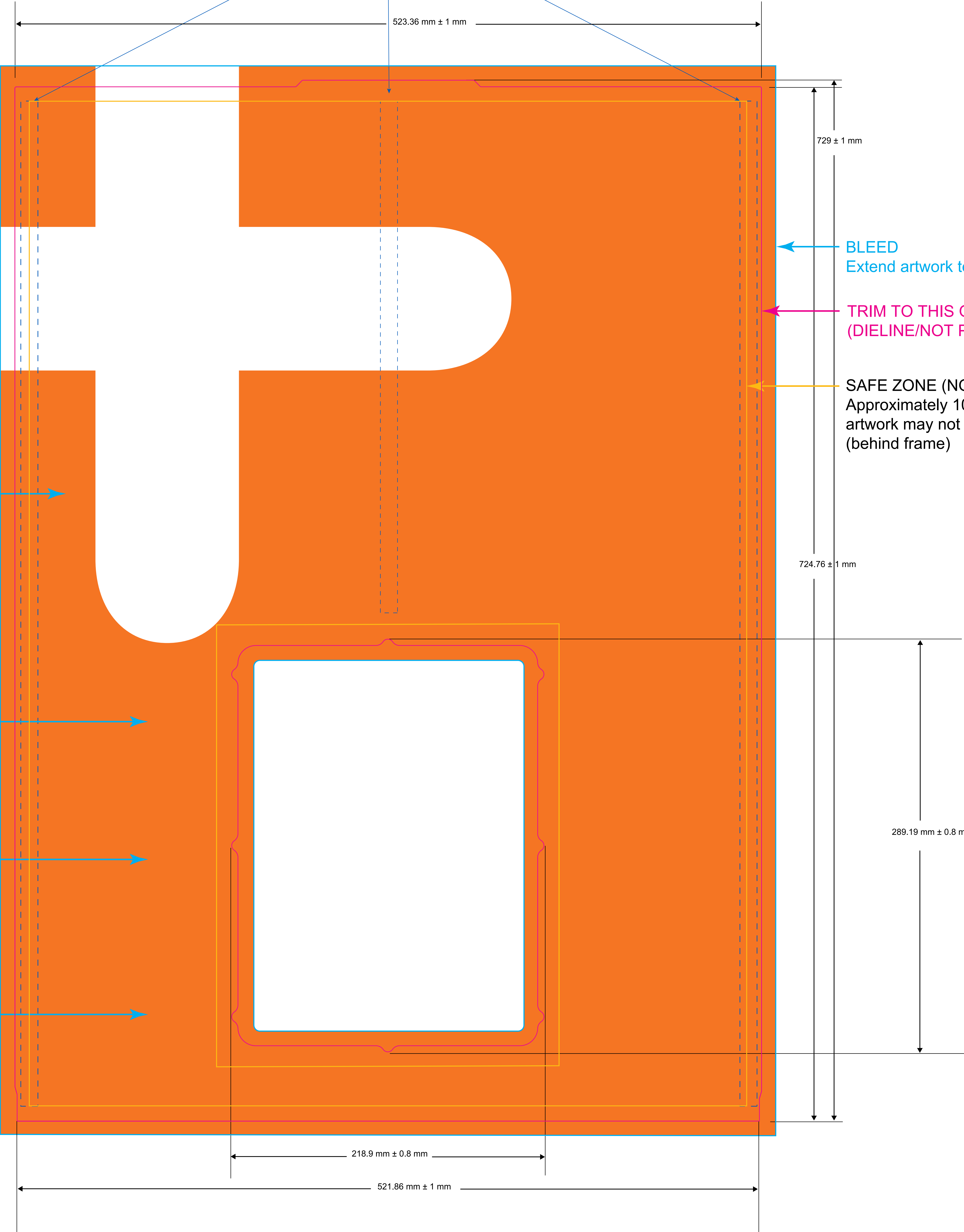
B-5106EB Thermal Transfer Printable White Polyester

Match to PMS 158 Orange
NOR-COTE weatherable CMG ink

3M680CR-10 Matrix Adhesive

White, Static Cling, Vinyl,
General Formulations, 208-27

3M 476MP, ACRYLIC ADHESIVE ON BACK SURFACE W/BACKING
12mm x 705mm ACRYLIC ADHESIVE W/ BACKING (QTY 2)
12mm x 359mm ACRYLIC ADHESIVE W/ BACKING (QTY 1)



SCALE 1.000

EXPRESS PLUS POWER LINK
CUSTOM SIGN TEMPLATE
- FRONT BOTTOM



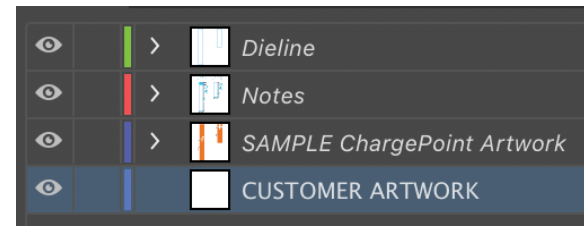
- NOTES & REQUIREMENTS
- Artwork must be in **vector** format.
Do not use raster images.
 - Artwork must be in CMYK process color.
(Call out any PMS numbers for reference,
but artwork is screen printed using
CMYK only.)
 - Solid color only, no transparency or gradients
 - For full bleed artwork, provide minimum
5-mm bleed
 - Convert all fonts to outlines
- * ChargePoint artwork and notes are included
as reference (ChargePoint Reference
Artwork layer).

MATERIALS
Total thickness 0.040" max, comprised of:

1. Substrate:
 - a. White styrene, 0.030" thick
 - b. Non-reflective graphic film
 - c. Color: White.
2. UV curable, lightfast ink:
 - a. Opacity: High.
Gloss: High.
Formulation: Automotive grade.
Performance: 5-year.
 - b. In North America: NOR-COTE XL6 ink.
3. External PVC laminate:
 - a. Thickness: 2mil.
Opacity: Clear.
UV Protection extension factor: 4 years
 - b. In North America: 0.002" thick
ORAGUARD 290 PVC

Finished label is ROHS compliant.

ChargePoint standard artwork is
included for reference only.
Place custom artwork on
CUSTOMER ARTWORK layer:

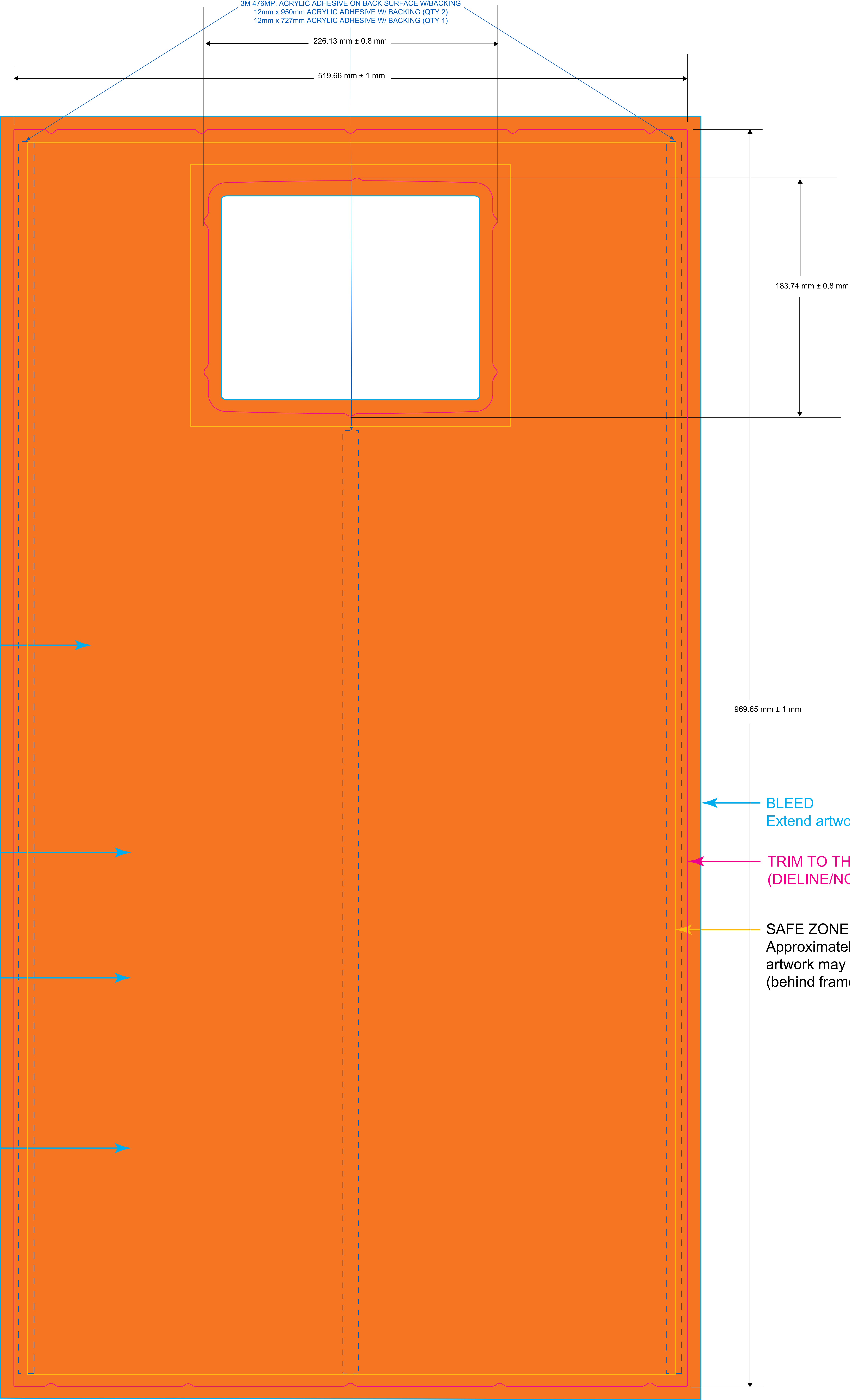


B-5106EB Thermal Transfer Printable White Polyester

Match to PMS 158 Orange
NOR-COTE weatherable CMG ink

3M680CR-10 Matrix Adhesive

White, Static Cling, Vinyl,
General Formulations 208-27



SCALE 1.000

EXPRESS PLUS POWER LINK
CUSTOM SIGN TEMPLATE
- FRONT CMK



NOTES & REQUIREMENTS

- Artwork must be in **vector** format.
Do not use raster images.
- Artwork must be in CMYK process color.
(Call out any PMS numbers for reference, but artwork is screen printed using CMYK only.)
- Solid color only, no transparency or gradients
- For full bleed artwork, provide minimum 5-mm bleed
- Convert all fonts to outlines
- * ChargePoint artwork and notes are included as reference (ChargePoint Reference Artwork layer).

MATERIALS

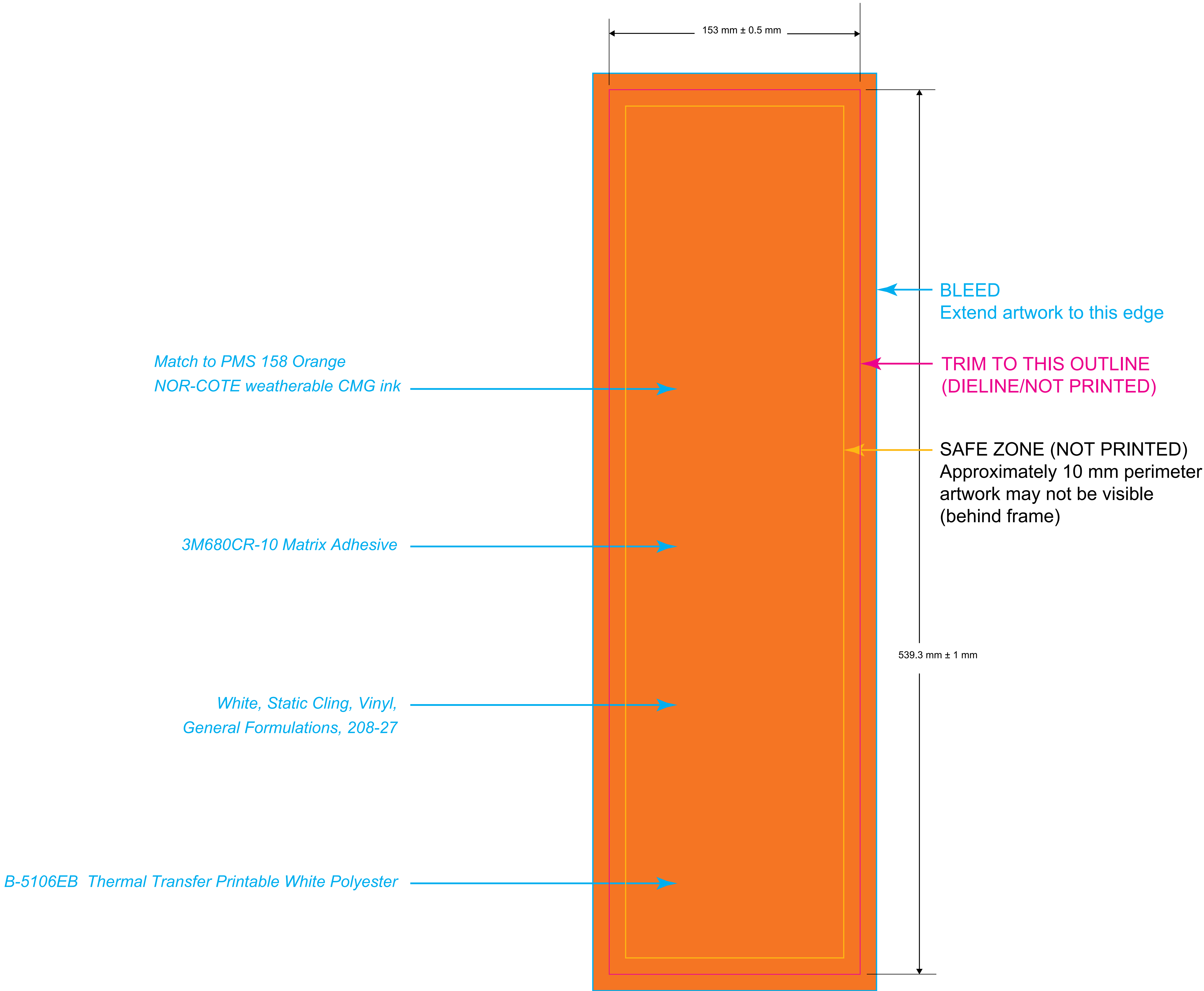
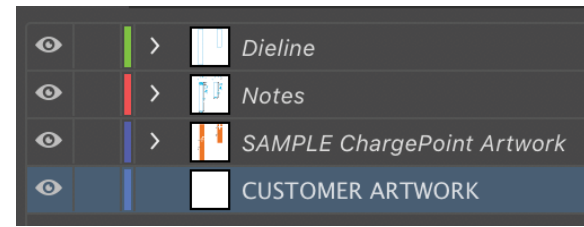
Total thickness 0.040" max, comprised of:

1. Substrate:
 - a. White styrene, 0.030" thick
 - b. Non-reflective graphic film
 - c. Color: White.
2. UV curable, lightfast ink:
 - a. Opacity: High.
Gloss: High.
Formulation: Automotive grade.
Performance: 5-year.
 - b. In North America: NOR-COTE XL6 ink.
3. External PVC laminate:
 - a. Thickness: 2mil.
Opacity: Clear.
UV Protection extension factor: 4 years
 - b. In North America: 0.002" thick
ORAGUARD 290 PVC

Finished label is ROHS compliant.

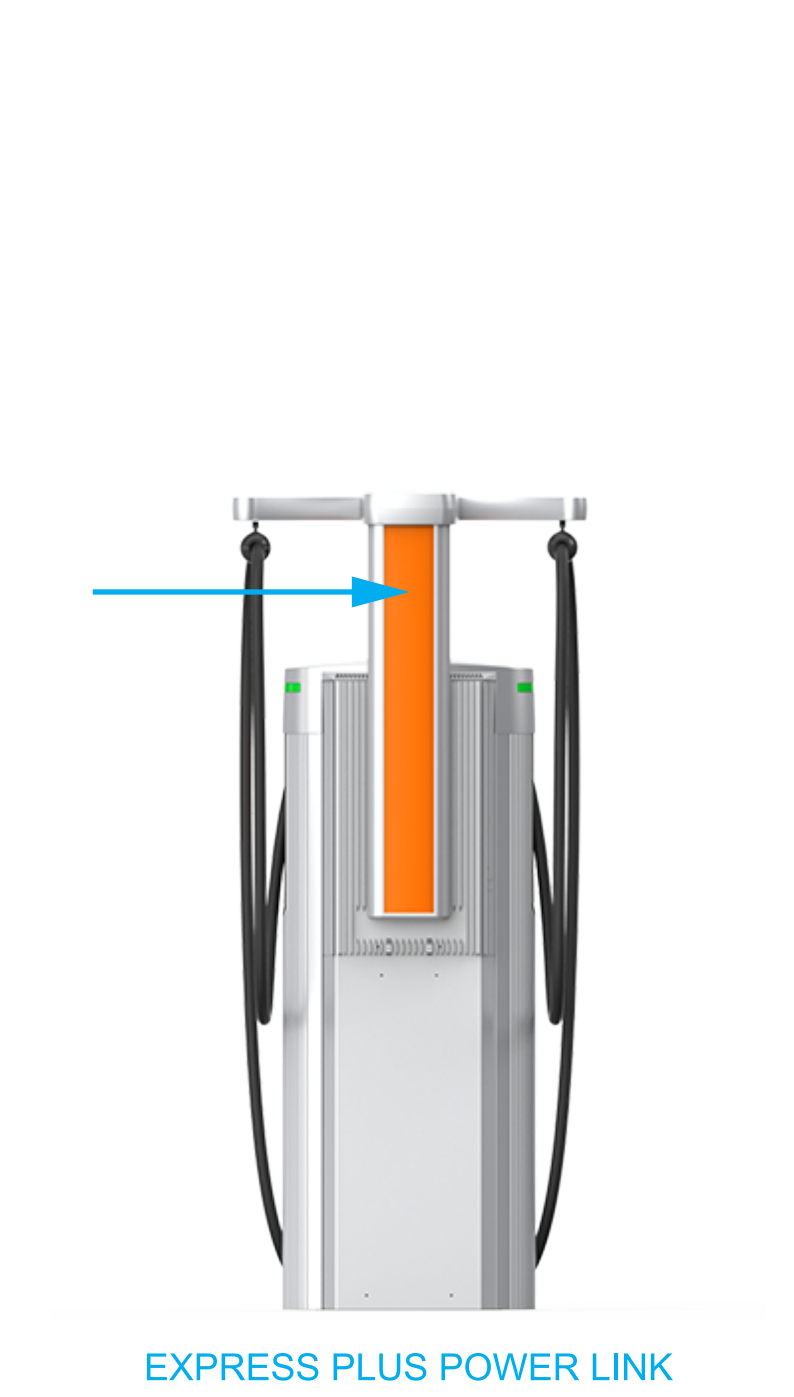
ChargePoint standard artwork is included for reference only.

Place custom artwork on CUSTOMER ARTWORK layer:



SCALE 1.000

EXPRESS PLUS POWER LINK
CUSTOM SIGN TEMPLATE
- BACK CMK



NOTES & REQUIREMENTS

- Artwork must be in **vector** format. Do not use raster images.
- Artwork must be in CMYK process color. (Call out any PMS numbers for reference, but artwork is screen printed using CMYK only.)
- Solid color only, no transparency or gradients
- For full bleed artwork, provide minimum 5-mm bleed
- Convert all fonts to outlines
- * ChargePoint artwork and notes are included as reference (ChargePoint Reference Artwork layer).

MATERIALS

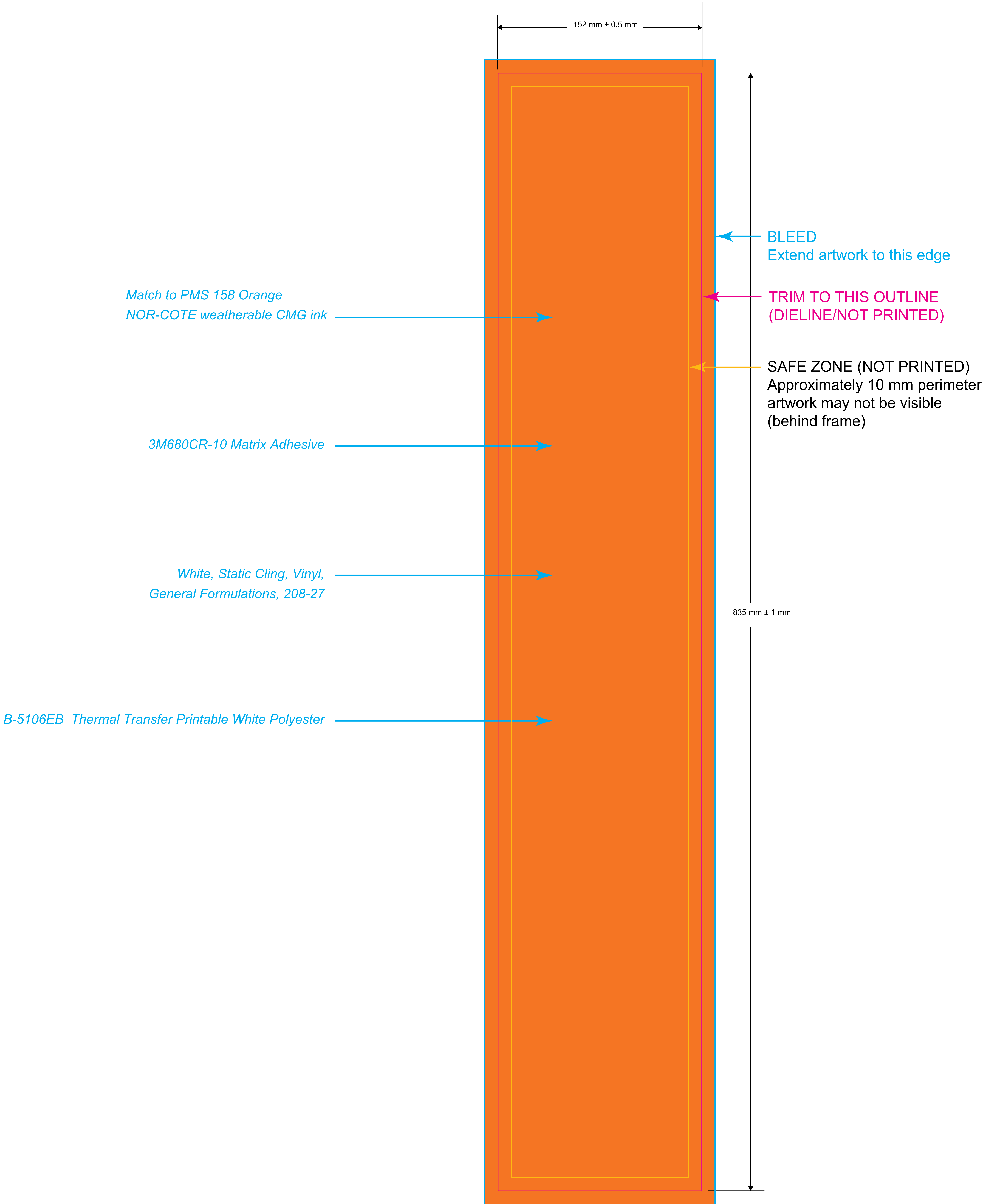
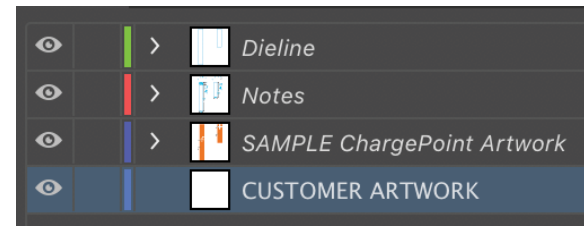
Total thickness 0.040" max, comprised of:

1. Substrate:
 - a. White styrene, 0.030" thick
 - b. Non-reflective graphic film
 - c. Color: White.
2. UV curable, lightfast ink:
 - a. Opacity: High.
 - Gloss: High.
 - Formulation: Automotive grade.
 - Performance: 5-year.
3. External PVC laminate:
 - a. Thickness: 2mil.
 - Opacity: Clear.
 - UV Protection extension factor: 4 years
- b. In North America: 0.002" thick ORAGUARD 290 PVC

Finished label is ROHS compliant.

ChargePoint standard artwork is included for reference only.

Place custom artwork on CUSTOMER ARTWORK layer:



SCALE 1.000